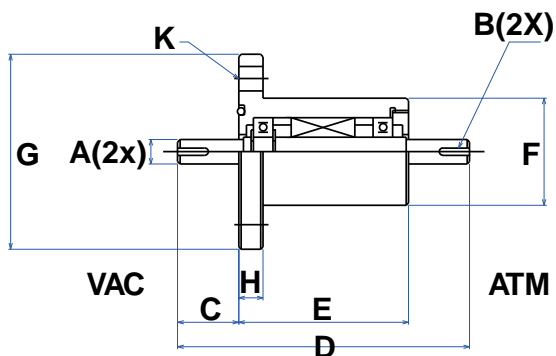
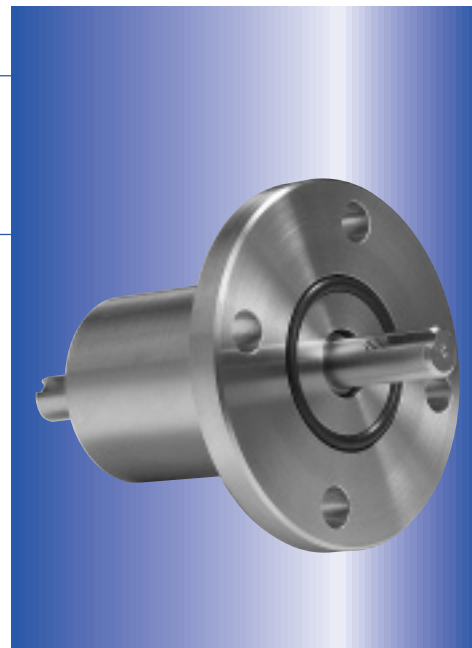


Flange Mount Feedthroughs



INCH SIZES

Model Number	SS-250-SLCB	SS-250-SLCA	SS-375-SLCBW	SS-375-CFCB* ¹	SS-500-SLFA	SS-500-SLCB	SS-750-SLFA	HD750SLFFW* ²
Part Number	103532	103915	103912	121060	103244	103909	103246	103904
Shaft diameter [in]	A 0.250	0.250	0.375	0.375	0.500	0.500	0.750	0.750
Shaft termination [in]	B .030d x .40L (flat)	.030d x .40L (flat)	.030d x .40L (flat)	.030d x 40L (flat)	.126w x 0.77d x 1.0L.(keyway)	126w x 0.77d x 1.0L.(keyway)	.188w x .114d x 1.0L.(keyway)	188w x .114d x 1.0L ATM, 2.0L VAC (keyway)
Shaft extension (Vac) [in]	C 0.75	0.75	0.75	0.750	1.25	2.5	1.218	2.67
Overall length [in]	D 4.06	3.25	4.56	4.50	6.03	8.656	6.03	9.396
Housing overall length [in]	E 2.56	1.75	3.06	3.00	3.56	4.906	3.562	4.88
Housing diameter [in]	F 1.50	0.75	1.50	1.50	2.87	2.375	2.87	3.00
Flange diameter [in]	G 2.73	1.33	2.73	2.73	6.00	2.73	6.00	5.00
Flange thickness [in]	H 0.50	0.28	0.50	0.50	0.38	0.50	0.38	0.56
Fitting locations for optional water cooling	n/a	n/a	1.07, 1.24	0.75 (p/n 121099)	0.5, 1.74 (p/n103182)	n/a	n/a	1.58, 1.54
Mounting holes	K 0.265, 6x on 2.312 bc.	0.172, 6x on 1.062 bc.	0.265, 6x on 2.312 bc.	0.265, 6x on 2.312 bc.	0.750, 4x on 4.750 bc.	0.265, 6x on 2.312 bc.	0.750, 4x on 4.750 bc.	0.406, 6x on 4.000 bc.
Torque capacity [lb-in]	15	15	67	67	180	180	670	207 ft-lb
Bearing type/material	R4/SS	R4/SS	R6/SS	6800/SS	R8/SS	R8/SS	R12/SS	7305/BS
Maximum no-load speed [rpm]	10,000	10,000	10,000	10,000	10,000	10,000	8,100	3,000
Face seal O-ring	ConFlat Flange	ConFlat Flange	ConFlat Flange	ConFlat Flange	2-234	ConFlat Flange	2-234	2-337

*¹ cantilevered configuration

*² heavy duty

METRIC SIZES

Model Number	SFL-006-NN	SFL-010-NN	SFL-012-NN	SFL-020-NN	SFL-030-WH
Part Number	09295	09297	09299	09264	04094
Shaft diameter [mm]	A 6 ^{+0.018}	10 ^{+0.022}	12 ^{+0.027}	20 ^{+0.033}	30 ^{+0.033}
Shaft termination [mm]	B 0.5d x 12L (flat)	3w x 1.8d x 14L (keyway)	4w x 2.5d x 20L (keyway)	6w x 3.5d x 25L (keyway)	10w x 5d x 80L (keyway)
Shaft extension (Vac) [mm]	C 20	25	30	35	90
Overall length [mm]	D 97.5	119.5	133.5	151.5	321
Housing overall length [mm]	E 57.5	69.5	73.5	81.5	141
Housing diameter [mm]	F 38	44	48	63	105
Flange diameter [mm]	G 80	80	90	105	160
Flange thickness [mm]	H 10	10	10	10	20
Mounting holes	K 10, 4 x on a 60mm bc	10, 4 x on a 60mm bc	10, 4 x on a 70mm bc	10, 4 x on a 85mm bc	12, 6 x on a 135mm bc
Torque capacity [Nm]	2.5	13.5	23.5	108.5	365
Bearing type/material	627/SUS440C	6001/SUS440C**	6002/SUS440C	6005/SUS440C	6207/SUJ2***
Face seal O-ring	G25	G30	G35	G50	

* For additional ConFlat® and ISO Flange feedthroughs see page 13.

** similar to ISO 1.4435

*** similar to ISO 1.3505